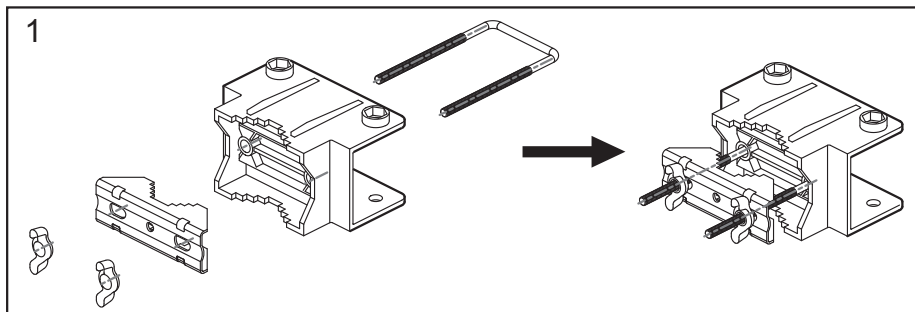
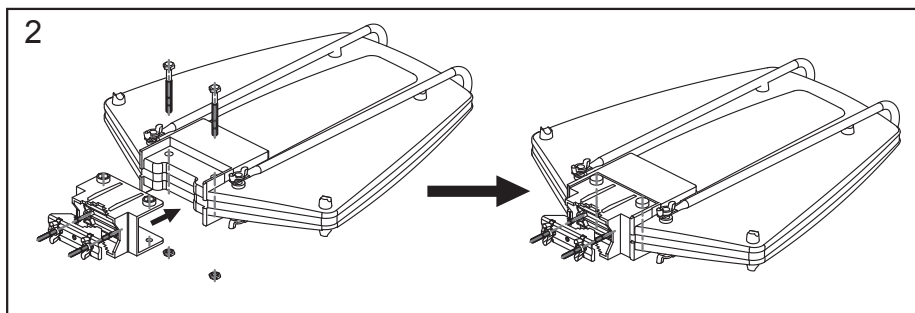


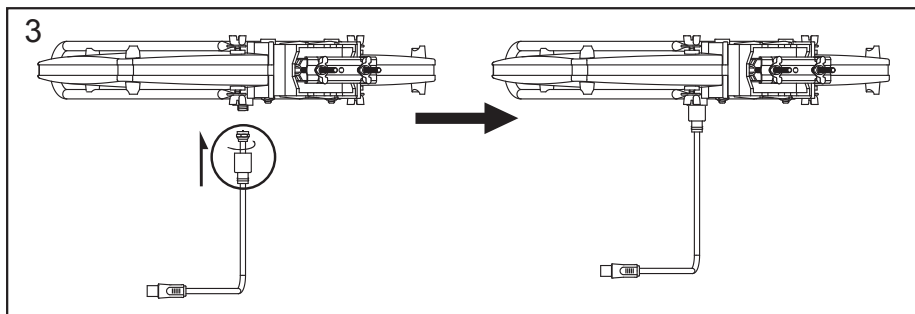
UHF/VHF/FM ACTIVE COLOR ANTENNA INSTALLATION AND OPERATING INSTRUCTIONS



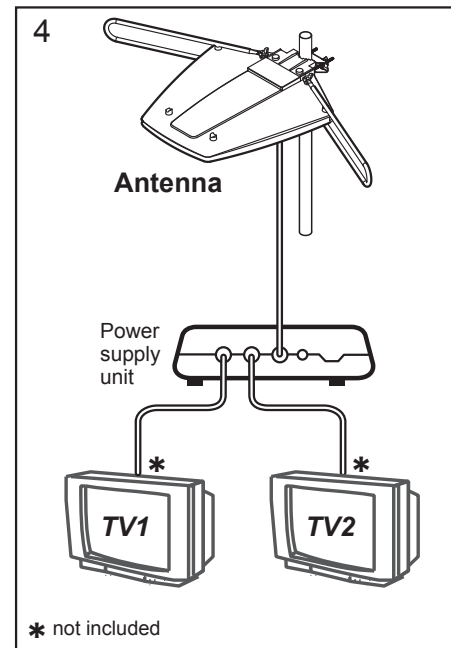
First insert the U-bolt into the fixed mount. Then mount the fixed U-shaped mount, tighten with the hex nuts as shown in the diagram above.



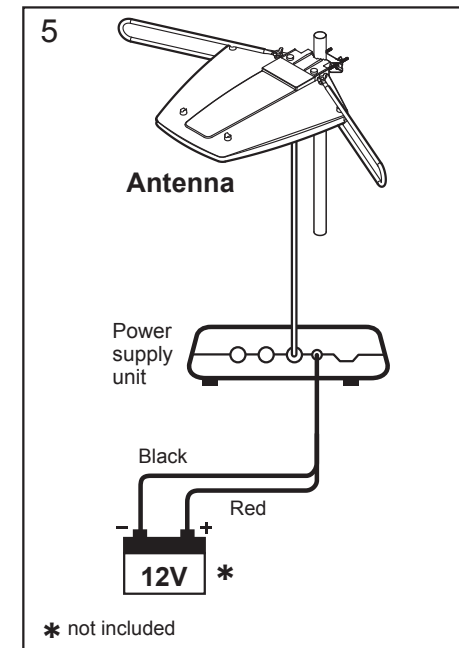
Insert the assembled fixed mount screw into the antenna body screw notch, tighten with the nuts underneath the fixed mount as shown in the diagram above.



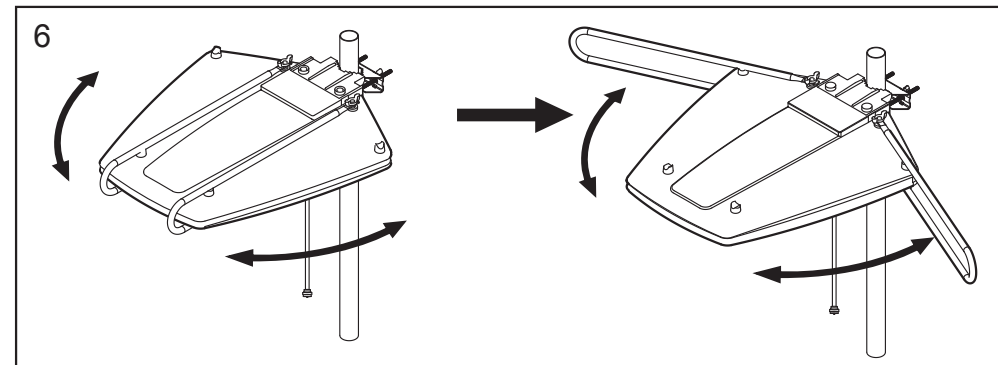
Tighten the cable onto the F-connector. After it is tightened, insert the water seal onto the antenna body as shown in the diagram above.



Connect your antenna to the power supply unit, and the power supply unit to one or two TVs.



Plug the power supply unit into a wall outlet or use the red and black cable for the power supply by a car battery*.



Unscrew the wing screw and deploy the two antennas, adjust the antennas for an optimal reception.

SPECIFICATIONS

- FREQUENCY: VHF 40~230MHz, UHF 470~862MHz
- GAIN: VHF 20dB, UHF 19dB
- FRONT BACK RATIO: UHF 16 ~ 6, VHF 0
- HALF POWER ANGLE: UHF 55° ~ 65°, VHF 60° ~ 80°
- OUTPUT IMPEDANCE: 75Ω, F FEMALE CONNECTOR

- VOLTAGE STANDING WAVE RATIO: 2~3
- NOISE FIGURE: 5dB Max.
- MAX. OUTPUT LEVEL: 95dBμV (IMA -60dB)
- APPLICABLE TEMPERATURE: -20°C ~ +50°C
- WIND SURFACE: 0.181m²

- WIND LOAD: 12.67 KPA
- FIXED MAST DIAMETER: 15~56mmØ
- POWER SOURCE: 12V --- 100mA